

RD1-UA SERIAL

Ultra-immune earth leakage system and signaling via external transformer of the TARD/TARD-A series.

GENERAL DESCRIPTION

Earth Leakage Relay RD1-UA is a microprocessor based electronic protection device has been designed. Recognizes low level leak. The main feature of RD1-UA is Preventive control of system insulation with Continuous display of earth leakage current It is obtained by using the TARD/TARD-A current transformer.

Electronic earth leakage protection relay connected to external transformers of the TARD/ TARD-A series. Ultra-immune system type relay with high-frequency current filtering and high immunity. Type A relay harmonic filter. True root mean square (TRMS) measurement. Daily triggered residual current.

FEATURES

Intervention delay time adjustment
Earth fault current regulation
<p>Dip switch for programming</p> <ul style="list-style-type: none"> - Auto reset (A) - manual reset (M) <p>Auto reset = Automatic</p> <p>Man reset = Manual reset with the RESET button on the front. For Remote reset simply disconnect the auxiliary power supply approximately 1 second</p> <ul style="list-style-type: none"> - Fixed selection for tx10 - tx1 delay time adjustment interrupt. - Fixed selection for x0.1IΔ - x1IΔ - x10IΔ regulation Earth fault current IΔ. Constants, as a function of The positions of the 2 dip switches are as follows: <ul style="list-style-type: none"> – dip switch position x0.1IΔ and x0.1IΔ K = 0.1 – dip switch position x1IΔ and x0.1IΔ K = 1 – dip switch position x1IΔ and 10IΔ K = 10
TEST button. Triggers the relay.
RESET button. To reset the relay after intervention.
POWER LED. Indicates the presence of auxiliary voltage



ISO 9001:2015

SPECIFICATIONS

RD1-UA
Earth Leakage
Protection Relay

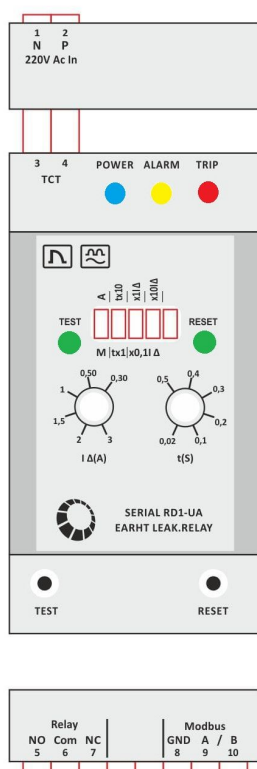
SUPPLY VOLTAGE	120/270 Vac -15%, +10% 50-60 Hz
POWER CONSUPTION	3VA (W) max
TEMPERATURE RANGE	Operational: da 0 °C a +50 °C Storage: da -20 °C a + 60 °C
RELATIVE HUMIDITY	Max. 90% (non condensing)
BURN IN	48 hours at 50 °C
DIELECTRIC WITHSTAND VOLTAGE	2 kVac, 60 s
CONSTRUCTION	According to , UL*, CEI standards
OUTPUT CONTACT	Rated current: 8A resitif @ 250Vac or 24Vdc 3A cosfi=0,4 @250Vac Max. operating Voltage: 250 Vac, 125 Vdc
INPUT	Rated Frequency Fn: 47 to 63 Hz Current Transformer (CT) ratio: 1/500 Input Impedance: 20 Ohm
DIGITAL INPUT (RD-1-UHD)	Type: Dry contacts only, 500 Ohm ON resistance
TRIP & ALARM PICKUP	30mA to 30A, steps of 1mA Accuracy: ±5% ±1 digit
DELAY TIME ALARM & TRIP PICKUP	0.02 to 10 sec in steps of 10 ms Accuracy: ±5% or ± 10 ms whichever is greater
FILTER	3 ^a arm -21 ^a arm harmonic components
TERMINAL BLOCK	Fixed terminals, 2,5mm ² -section cable (14 AWG).
FRAME	IP40, IP20 on back panel
INSTALLATION	35mm DIN rail
WEIGHT	200g
EMISSIONS TEST	<ul style="list-style-type: none">• Radiated emissions Reference Standard: EN 55022• Conducted emissions Reference Standard: EN 55014
IMMUNITY TESTS	<ul style="list-style-type: none">• Conducted disturbances induced by RF field Reference Standard: EN 61000-4-6• Radiated electromagnetic field Reference Standard: EN 61000-4-3• Electrostatic discharge Reference Standard: EN 60255-22-5• Fast transients (Burst) Reference Standard: References: EN 60255-22-4• Surge Reference Standard: EN 61000-4-5• Voltage dips and short interruptions Reference Standard: IEC 60255-11• 1MHz Burst Reference Standard: EN 60255-22-1
INSULATING TEST	<ul style="list-style-type: none">• Dielectric test and Pulse test Reference Standard: EN 60255-5 - Reference Standard: EN 60255-5



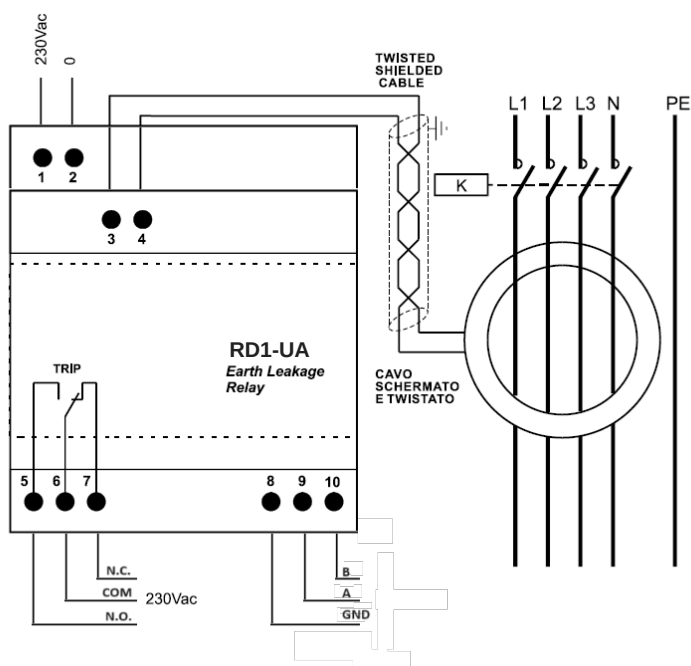
ISO 9001:2015

RD1-UA Earth Leakage Protection Relay

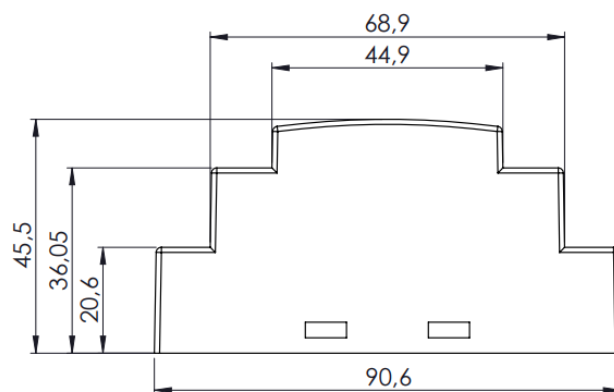
RD1-UA - OPERATORS AND ALARMS WITH VISUAL INDICATIONS



RD1-UA - WIRING DIAGRAM



RD1-UA – OVERALL DIMENSIONS



BMS OLÇUM ANALİZ MUHENDİSLİK ELEKTRİK PROJE OTOMASYON İNS.VE TİC.LTD.ŞTİ

ABDURRAHMAHGAZİ MAH.ATAYOLU CAD.HÜSEYİN ÇİÇEK PLAZA NO 31 KAT 5

Sancaktepe/İSTANBUL TÜRCHİA/TURKEY

www.bmsmuhendislik.com

info@bmsmuhendislik.com

Phone +90 850 220 10 22

Satış ve Teknik Destek +90 536 741 34 11